

Community Advisory Committee (CAC) – Orientation

Seattle Pacific University MIMP

August 4, 2020



Perkins&Will

Community Advisory Committee (CAC) – Orientation

SPU History and Enrollment



Perkins&Will

HISTORY OF SPU



Early Years: 1891–1919

- Seattle Seminary founded in 1891 by Free Methodist pioneers to train missionaries for overseas service. (34 students including primary, intermediate grades) Alexander Hall
- 1905 – Peterson built
- 1910 – added college level courses
- 1913 – changed name to Seattle Seminary and College
- 1915 - changed name again to Seattle Pacific College, five students in first graduating class in 1915.

Growing Enrollment and Academic Stature: 1920–44

- 1920s - enrollment climbed from 40 to more than 400.
- 1945 - World War II ended and enrollment grew from 400 students to 1,400

HISTORY OF SPU



The College Expands: 1945–69

- 1945 -1959, built five new buildings: Royal Brougham Pavilion, McKinley Auditorium, Watson Hall, Moyer Hall, and Marston Hall
- 1955 – purchased Camp Casey - 155 acres on Whidbey Island. (seaside campus for field study and outdoor education.)
- 1960s - 15 new buildings constructed: some of them - Demaray Hall, Crawford Music Building, Beegle Hall, Student Union Building, Weter Memorial Library, and Hill and Ashton residence halls. Remodeled 10 existing buildings, including improvements to Camp Casey, and acquired more than 70 real estate properties.

HISTORY OF SPU



The Emergence of a University: 1970–90

- 1977 – changed name to Seattle Pacific University.
- 1982 - McKenna Hall (School of Business) was constructed

Engaging the Culture, Changing the World: 1991–Now

- 1994 – Ames Library
- 2003 – Eaton Hall science building, OMH remodel
- Gwinn Commons remodel/construction; Emerson Hall
- 2013 – Arnett Hall built

ENROLLMENT

Last Updated: 10/30/2019

Fall Census:	2005	2010	2015	2016	2017	2018	2019
Headcount	3,873	4,117	4,175	4,061	3,813	3,688	3,529
% Change	2.5%	2.9%	-1.0%	-2.7%	-6.1%	-3.3%	-4.3%
Undergraduate	2,978	3,129	3,187	3,079	2,900	2,861	2,709
Non-Matriculated Undergraduate	44	10	15	16	11	15	8
Post-Baccalaureate	64	25	26	26	32	24	21
Masters	583	762	741	747	672	580	574
Doctoral	162	157	180	173	179	198	204
Non-Matriculated Graduate	42	34	26	20	19	10	13



Perkins&Will

Community Advisory Committee (CAC) – Orientation

Campus Planning Principles



Perkins&Will

LANDMARKS

identifiable reference points



Perkins&Will

(L) UNIVERSITY OF WASHINGTON

(R) UNIVERSITY OF WISCONSIN

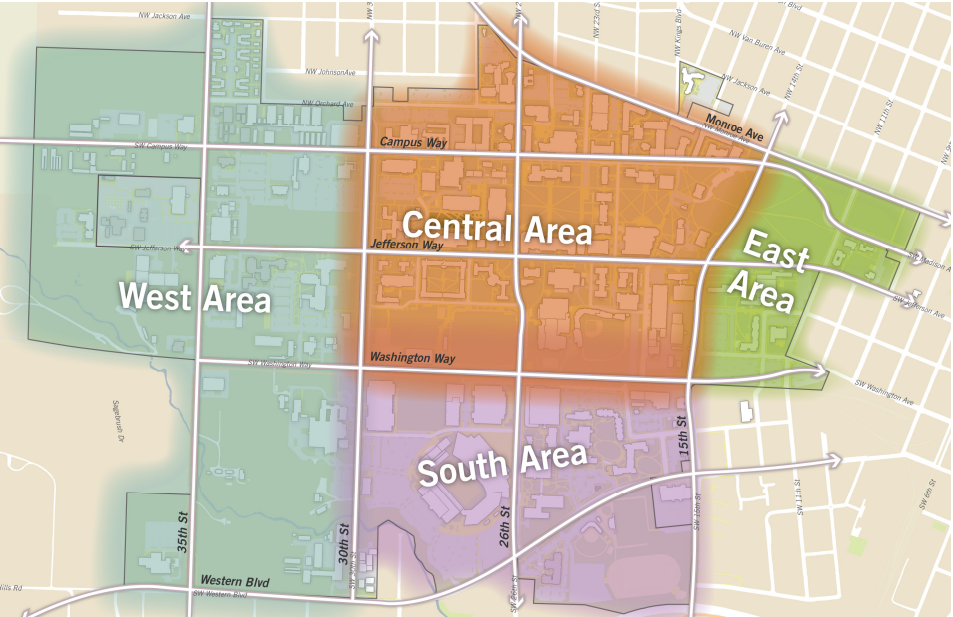
EDGES

walls, buildings, shorelines



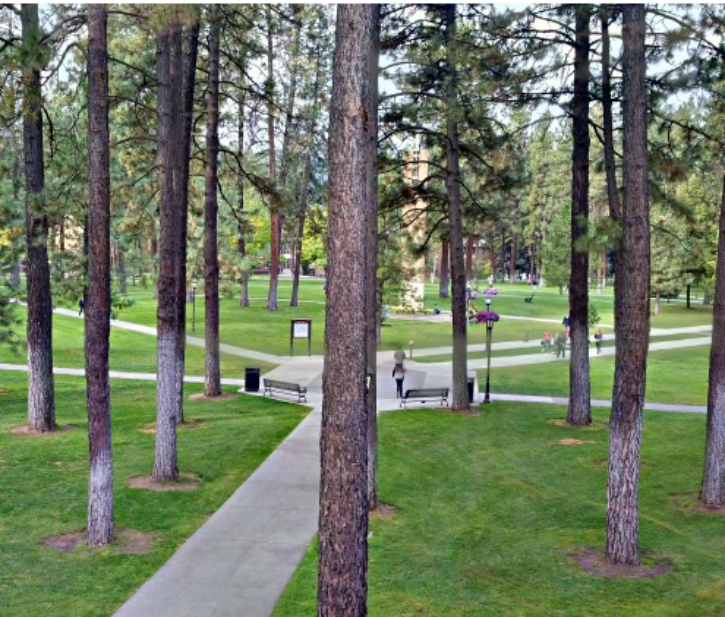
DISTRICTS

sections of campus



NODES

focal points, intersections



Perkins&Will

(L) WHITWORTH UNIVERSITY

(R) GENEVA COLLEGE

PATHS

streets, sidewalks, trails



Perkins&Will

(L) MESSIAH COLLEGE – Patriot News

(R) OREGON STATE UNIVERSITY

VARYING SCALES

private/semi-private/semi-public/public



Perkins&Will

(L) OREGON STATE UNIVERSITY /
NORTH CAROLINA STATE
UNIVERSITY / UNIVERSITY OF NEW
HAMPSHIRE

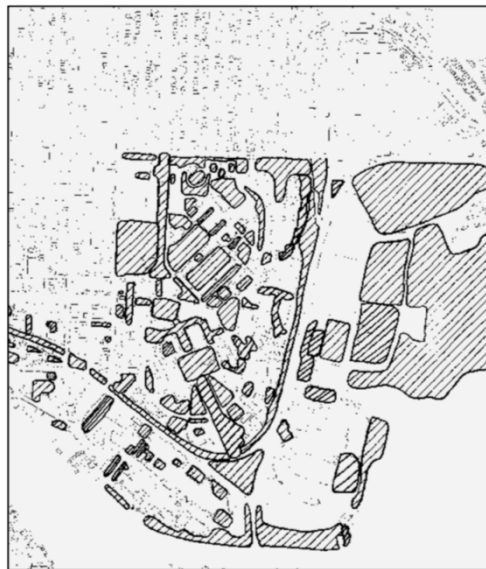
(R) UNIVERSITY OF VIRGINIA

UNIVERSITY OF WASHINGTON

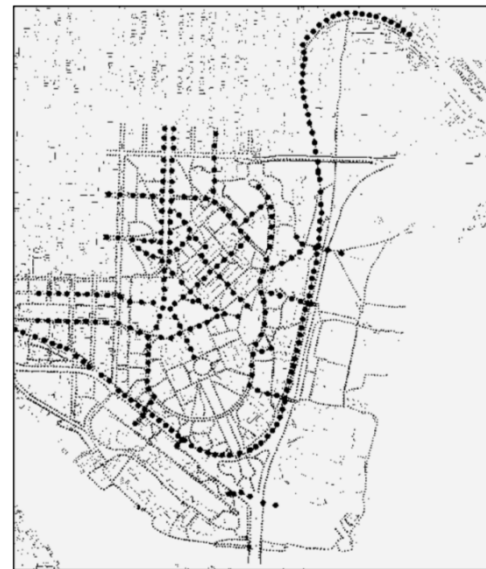
open space, circulation, development



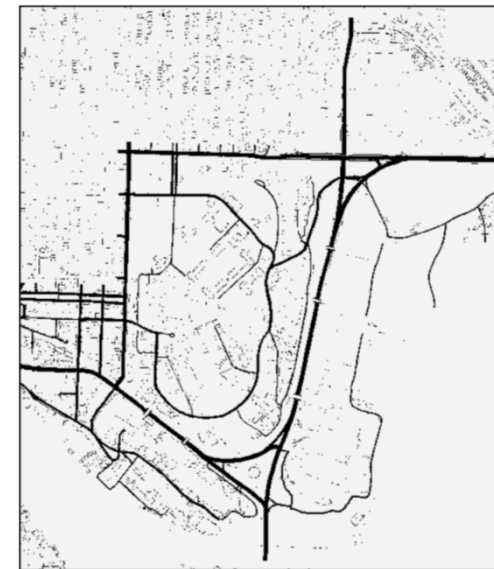
BUILT FORM



OPEN SPACE



CIRCULATION
PEDESTRIAN



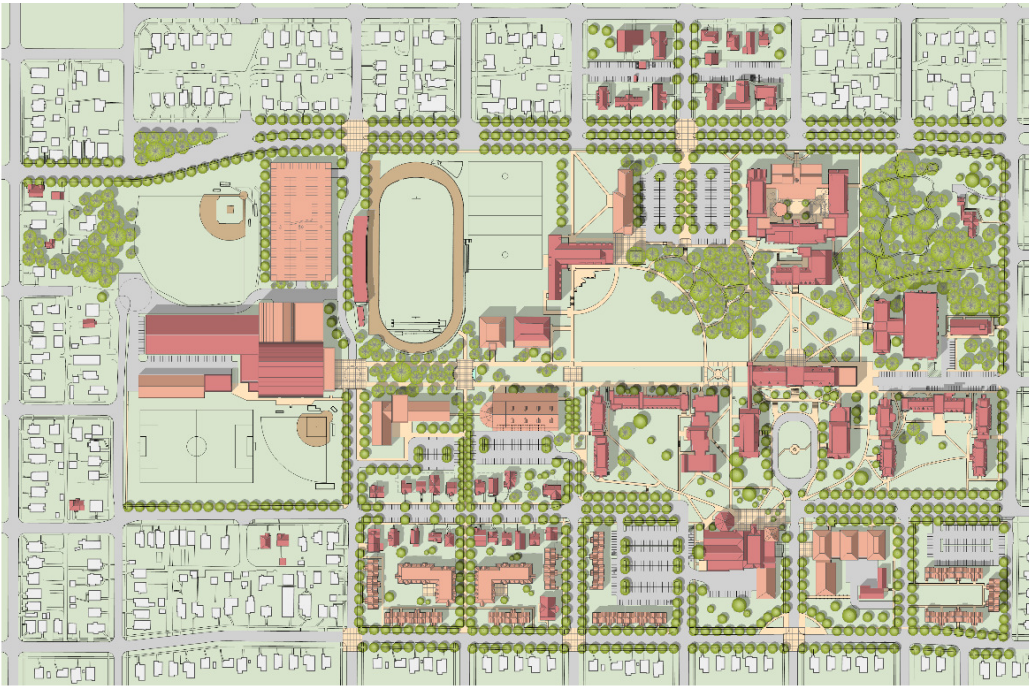
CIRCULATION
VEHICULAR



Perkins&Will

UNIVERSITY OF PUGET SOUND

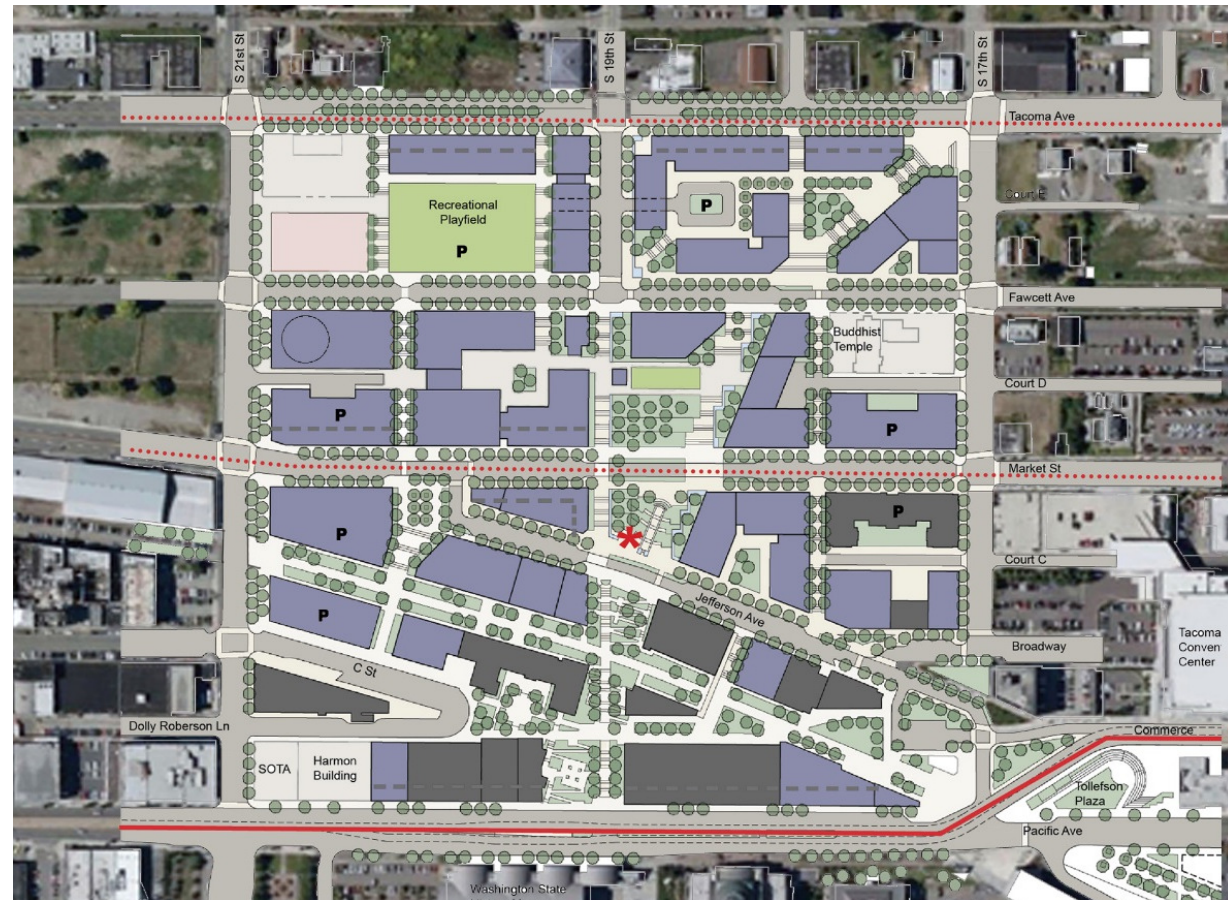
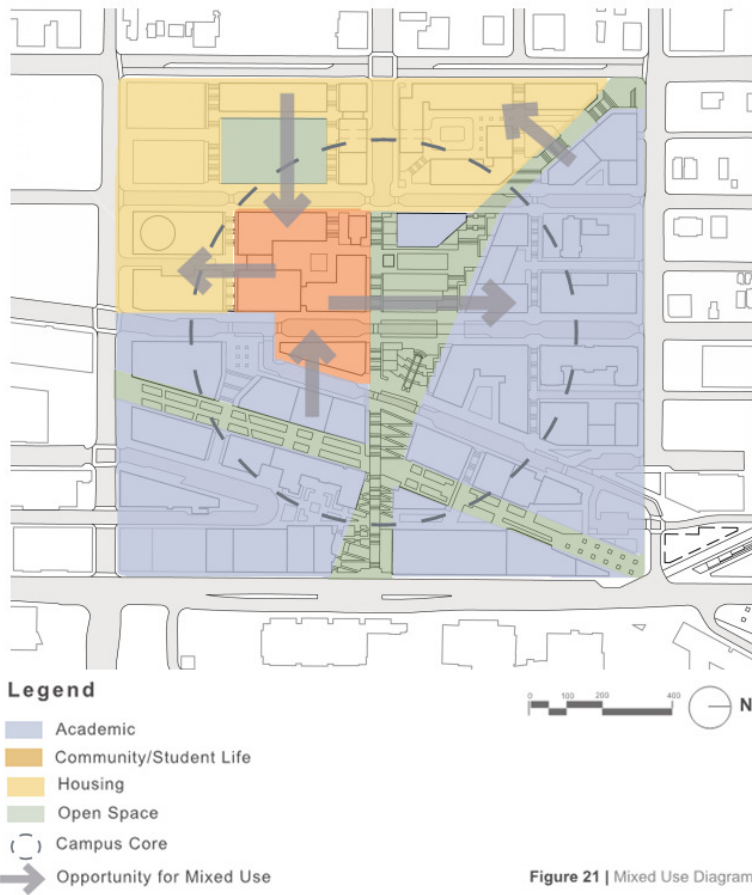
institution vision



Perkins&Will

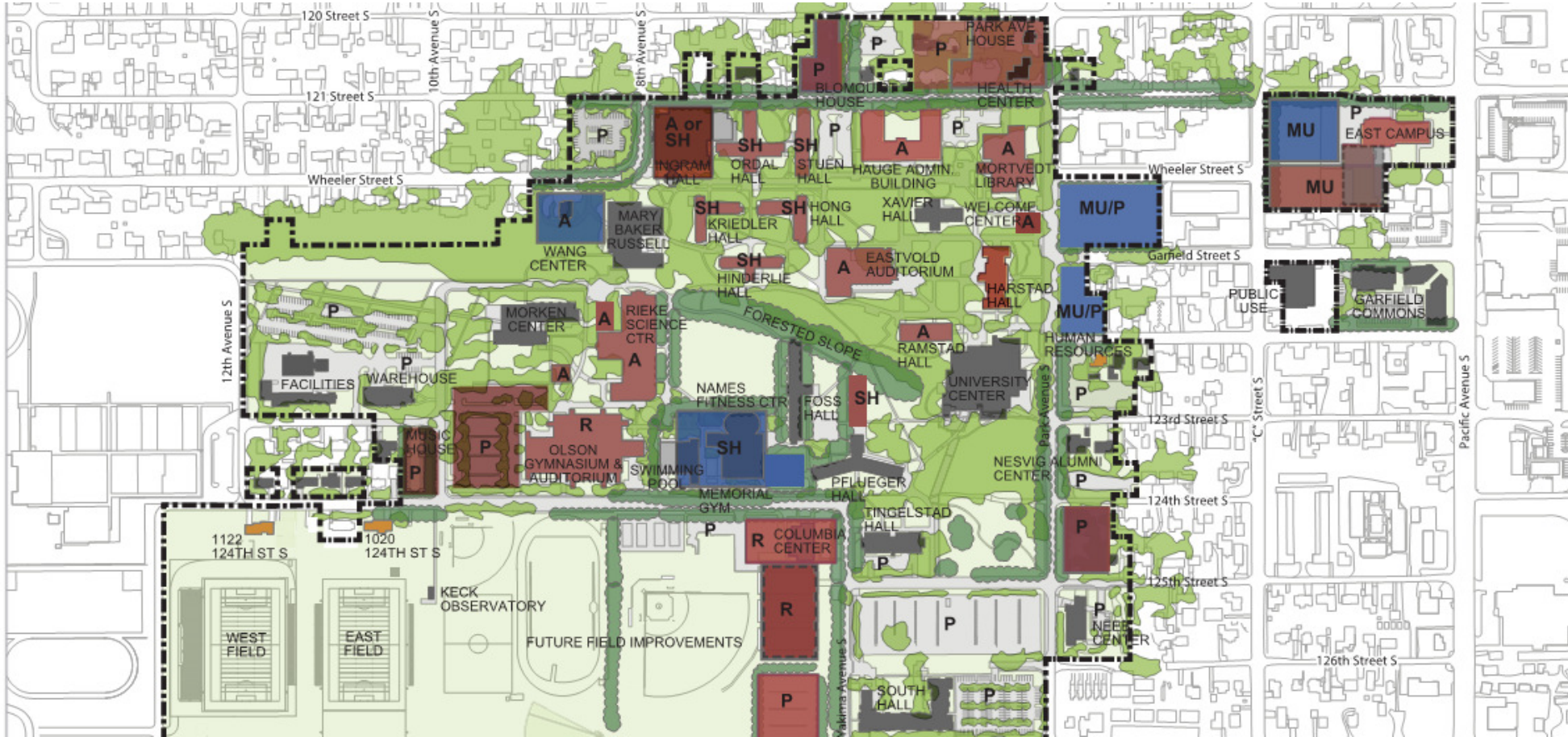
UNIVERSITY OF WASHINGTON, TACOMA

institution identity



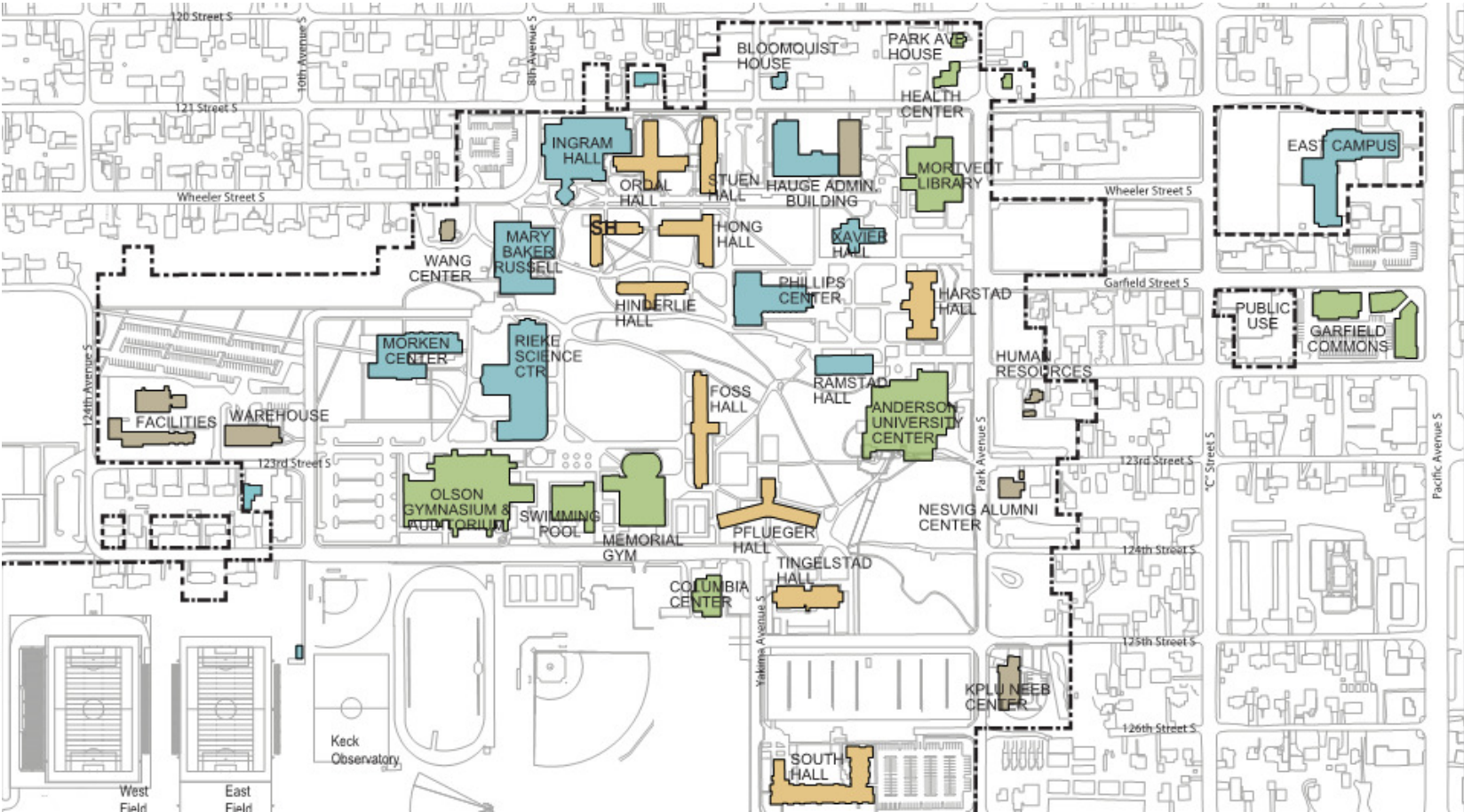
PACIFIC LUTHERAN UNIVERSITY

institution values



PACIFIC LUTHERAN UNIVERSITY

institution values



Community Advisory Committee (CAC) – Orientation

University's Planning Thoughts



Perkins&Will

UNIVERSITY'S CAMPUS PLANNING THOUGHTS

THREE LEVELS OF CULTURE

- ARTIFACTS, VALUES AND ASSUMPTIONS

CAMPUS PLANNING AS "PLACEMAKING"

GRIFFITH:

- A "SPECIAL PLACE APART" WITH A VISIBLE COHERENCE THAT FACILITATES CAMPUS FUNCTIONS.

CAMPUS PLANNING AS "PLACEMAKING"

KENNEY, DUMONT AND KENNEY: AREAS THAT INFLUENCE SENSE OF PLACE:

- A SYMBOL OF INSTITUTIONAL IDENTITY, VISION AND VALUES.
- A SETTING THAT CREATES MEMORIES, SENSE OF BELONGING, FEELING OF COMMUNITY.
- COLLEGE TRADITIONS
- EVERYDAY EXPERIENCE



Perkins&Will

Community Advisory Committee (CAC) – Orientation

Summary of Space Issues



Perkins&Will

Needs Assessment

SUMMARY OF SPACE ISSUES - HIGHLIGHTS

OVERALL

- MAJOR DEFICIENCIES IN COMPARISON TO PEERS
 - CLASSROOMS
 - ARTS AND HUMANITIES
 - STUDENT SERVICES
 - ATHLETICS AND RECREATION
 - OVERALL UNASSIGNED SPACE

ARTS & SCIENCES

- MORE PERFORMANCE/GALLERY SPACE
- BUILDINGS UNDERSIZED/CRAMPED
- FACILITIES DO NOT SUPPORT PLANNED GROWTH

EDUCATION

- DESIGN CLASSROOMS FOR ALL AGE GROUPS
- PROVIDE AMENITIES FOR GRADS, MOTHERS, COMMUTERS, & OTHER NON-TRADITIONALS

BUSINESS, GOVERNMENT, ECONOMICS

- MORE OFFICES & COLLABORATION SPACES
- BUILDING FEELS LIKE “HIGH SCHOOL”



Needs Assessment

SUMMARY OF SPACE ISSUES - HIGHLIGHTS

COMPUTER & INFORMATION SYSTEMS

- GROUP SPLIT BETWEEN 2 SPACES
- INADEQUATE BACKUP SYSTEMS
- PBX LOCATION & SECURITY

HEALTH & HUMAN PERFORMANCE

- INADEQUATE LAB & TRAINING SPACES
- RESOURCE CONFLICTS WITH ATHLETICS

PSYCHOLOGY, FAMILY, & COMMUNITY

- INADEQUATE COMMUNITY OUTREACH CLINIC
- MORE RESEARCH SPACE
- NEED ROOM FOR GROWTH

STUDENT ACADEMIC SERVICES

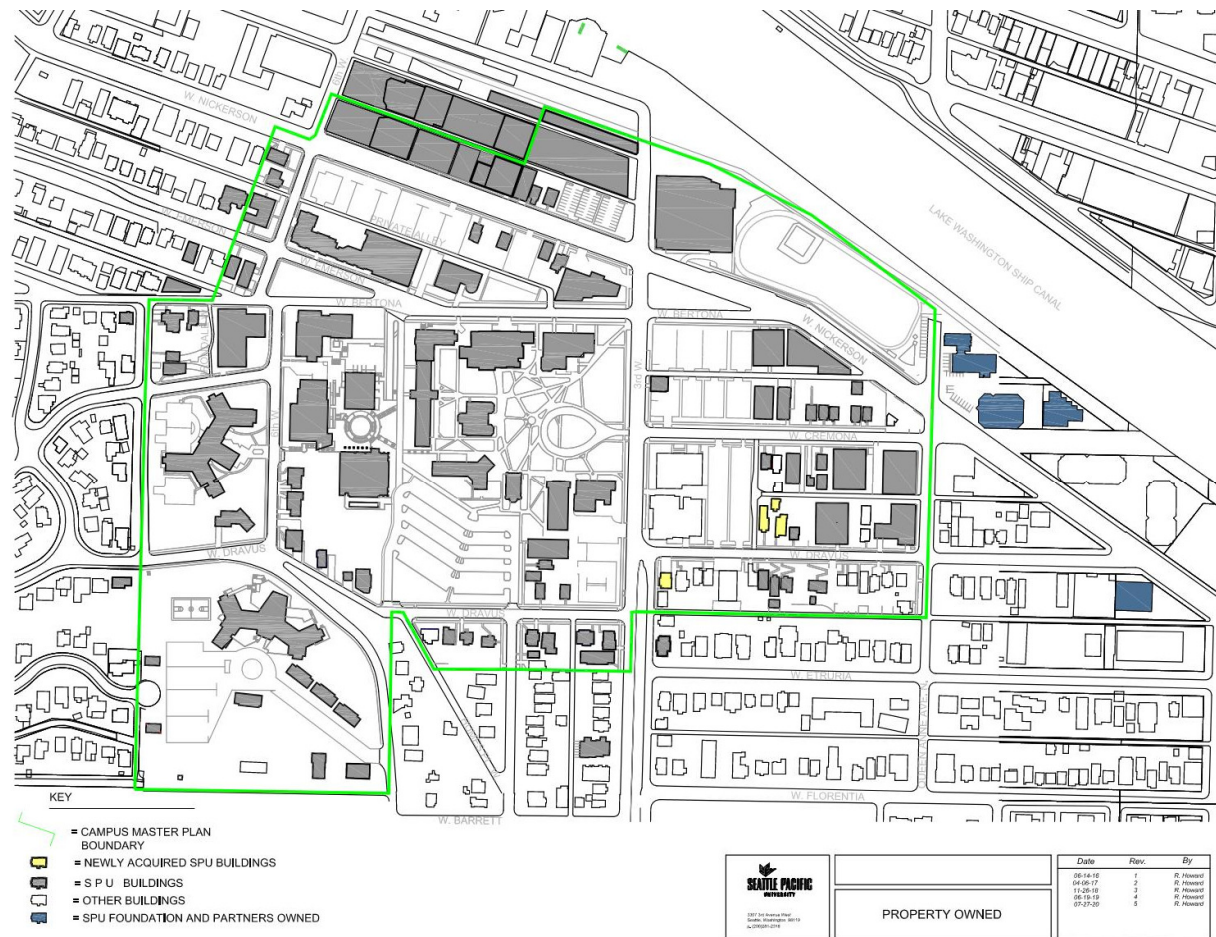
- TEAM DIVIDED BETWEEN SPACES
- PRIVACY FOR COUNSELING
- ACCESSIBILITY

SCHOLARSHIP & FACULTY DEVELOPMENT

- CLASSROOMS TOO SMALL
- MORE ACTIVE-LEARNING SPACES
- GOOD CLASSROOMS IN CAMPUS "CORE"



SPU PROPERTY OWNERSHIP



NEXT STEPS

