

PROJECT SCOPE:

RENOVATION OF SEATTLE PACIFIC UNIVERSITY'S ASHTON AND HILL HALL RESTROOMS. THE INTENT IS TO PROVIDE NON-STRUCTURAL UPGRADES TO INTERIOR FINISHES, ELECTRICAL, PLUMBING AND MECHANICAL SYSTEM.

THE RENOVATION WILL INCLUDE:
 DEMOLITION OF ALL INTERIOR NON-STRUCTURAL WALLS AND REPLACEMENT WITH NEW GALVANIZED METAL STUD FRAMING
 PLUMBING UPGRADES:

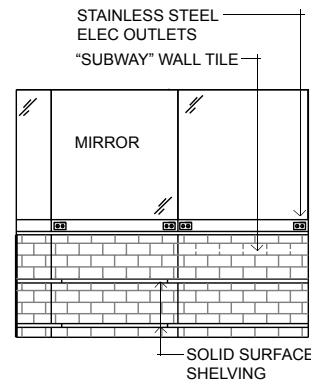
- REPLACEMENT OF ALL PLUMBING FIXTURES:
 - NEW WALL HUNG URINALS WITH LOW FLOW FLUSHOMETER,
 - NEW WALL HUNG TOILETS WITH DUAL FLUSH FLUSHOMETERS,
 - NEW UNDERMOUNT LAVATORIES WITH NEW FAUCETS
 - NEW SHOWER ACCESSORIES AND VALVES
 - REPLACEMENT OF WATERLINES, DRAINS AND DRAIN STACKS AT ALL SHOWERS

- INTERIOR FINISH AND FIXTURE UPGRADES
 - NEW WALL AND FLOOR TILES
 - NEW EPOXY FLOOR AT SHOWER AREA
 - NEW GYPSUM WALL BOARD CEILING
 - NEW TOILET ACCESSORIES
 - NEW SHELVING FOR STORAGE OF SHOWER CADDIES

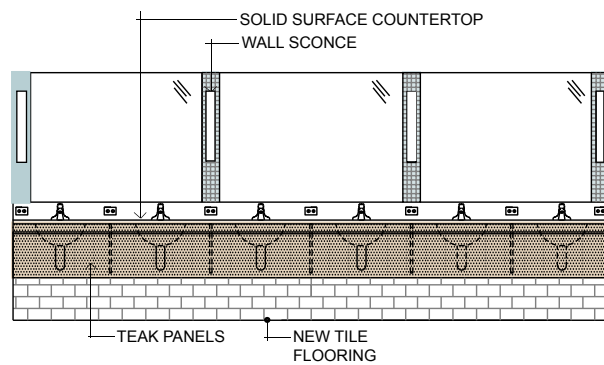
- ELECTRICAL UPGRADES
 - RECESSED DOWNLIGHTS
 - WALL SCONCES AT LAVATORY AREA
 - ADDITION OF ELECTRICAL OUTLETS

- MECHANICAL UPGRADES
 - IMPROVED VENTILATION

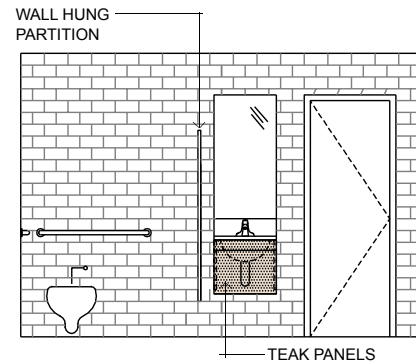
- ACCESSIBILITY UPGRADES
 - ACCESSIBLE ENTRANCE
 - BARRIER FREE TOILET COMPARTMENT WITH GRAB BARS
 - BARRIER FREE SHOWER WITH GRAB BARS
 - DELETION OF CURBS FOR ACCESSIBILITY TO SHOWER AREA



TYPICAL INTERIOR ELEVATION AT VANITY



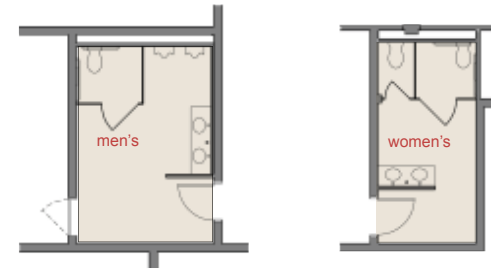
TYPICAL INTERIOR ELEVATION AT LAVATORY



TYPICAL INTERIOR ELEVATION AT PUBLIC RESTROOM (VIEW SHOWS WOMEN'S RESTROOM AT ASHTON HALL)

HILL HALL

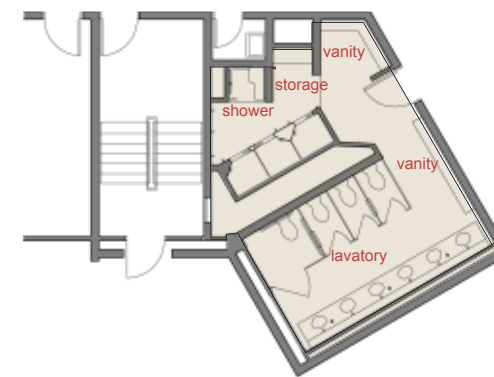
9 GROUP RESTROOMS
 TWO PUBLIC RESTROOMS



HILL HALL LEVEL 2 PUBLIC RESTROOM



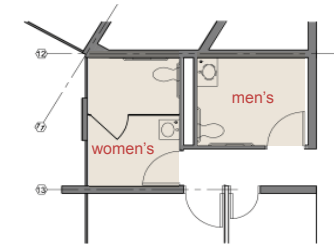
HILL HALL MEN'S WING TYPICAL CORE PLAN LEVELS 1 THRU 4



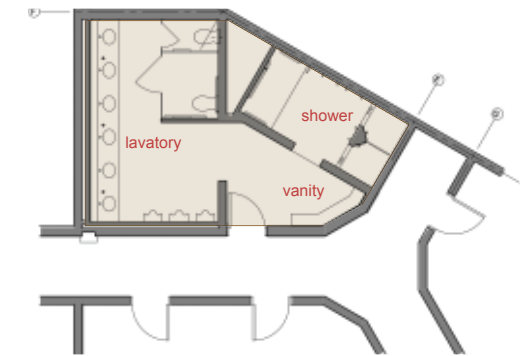
HILL HALL WOMEN'S WING TYPICAL CORE PLAN LEVELS 1 THRU 5

ASHTON HALL

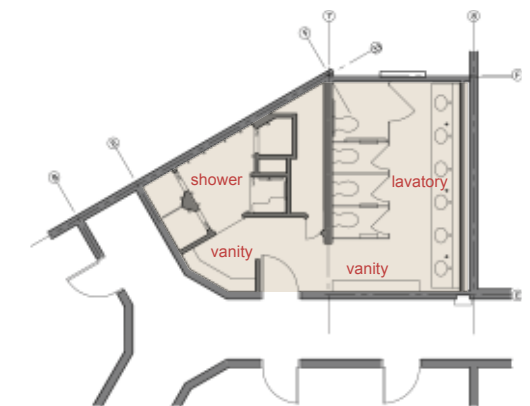
12 GROUP RESTROOMS
 TWO PUBLIC RESTROOMS



ASHTON HALL LEVEL 1 PUBLIC RESTROOM



ASHTON HALL WEST WING TYPICAL CORE PLAN LEVELS 1 THRU 2 WOMEN'S ;LEVELS 3 THRU 6 MEN'S



ASHTON HALL EAST WING TYPICAL CORE PLAN LEVEL 1 THRU 6 WOMEN'S

RESTROOM RENOVATION SCHEDULE : 2011

	JAN	FEB	MARCH	APRIL	MAY	JUNE	JULY	AUG	SEPT
CONSTRUCTION DOCUMENT PHASE	█	█	█	█	█				
UNIVERSITY REVIEW AND APPROVAL			█	█	█				
PROJECT BID PERIOD				█	█				
PLUMBING/ELEC PERMITTING					█				
BEGIN CONSTRUCTION						█	█	█	█
						█	█	█	█
						█	█	█	█
OCCUPANCY									█*

Ashton West 2011 (Jan-May)
 Ashton East 2012 (Jun-Sep)
 Hill North and South 2013 (Jun-Sep)