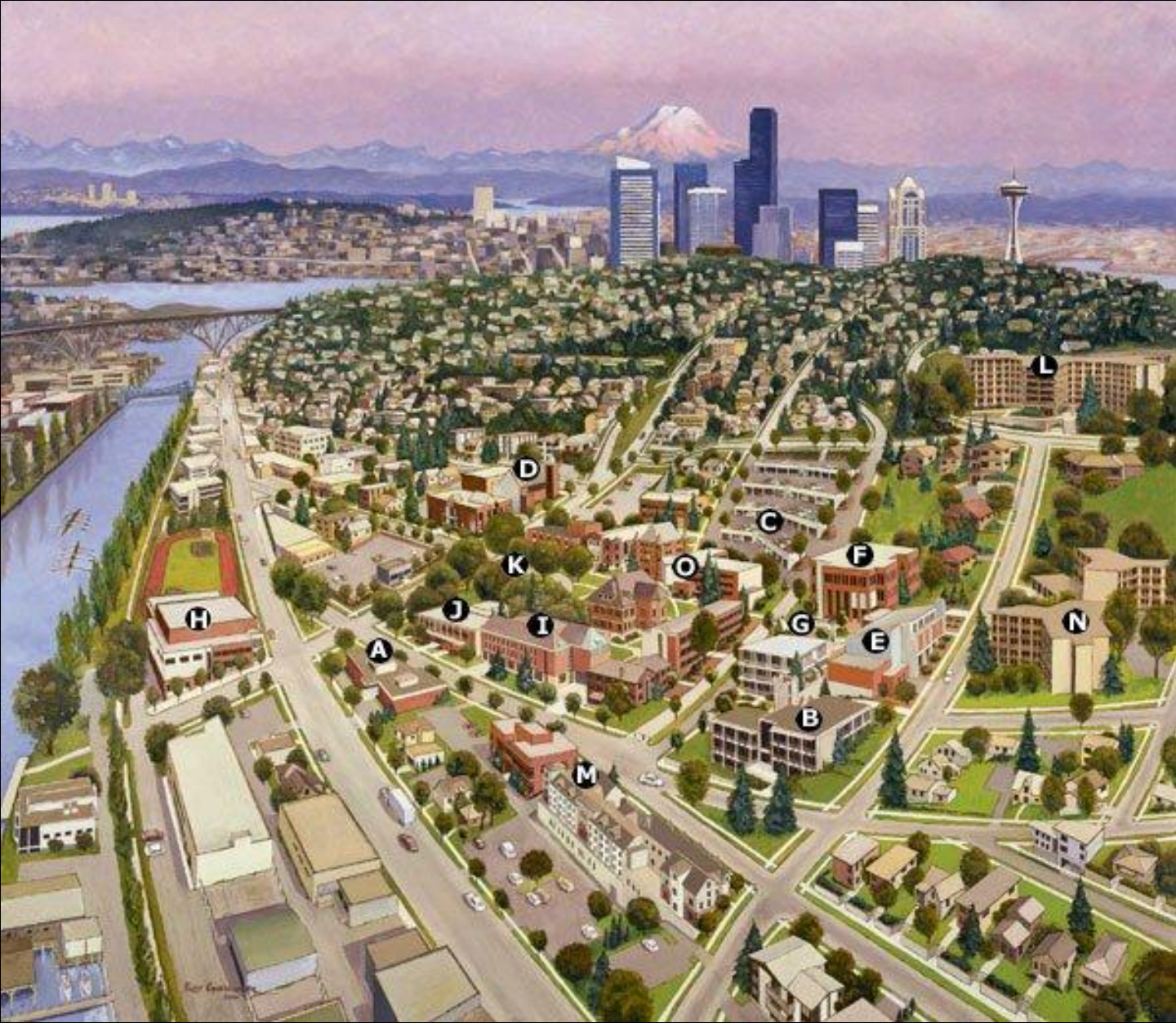


Seattle Pacific University

Irondale Student Housing

Presentation | October 18, 2012





Seattle Pacific University Campus
Community connections



Seattle Pacific University Campus Map
Proposed Irondale Student Housing



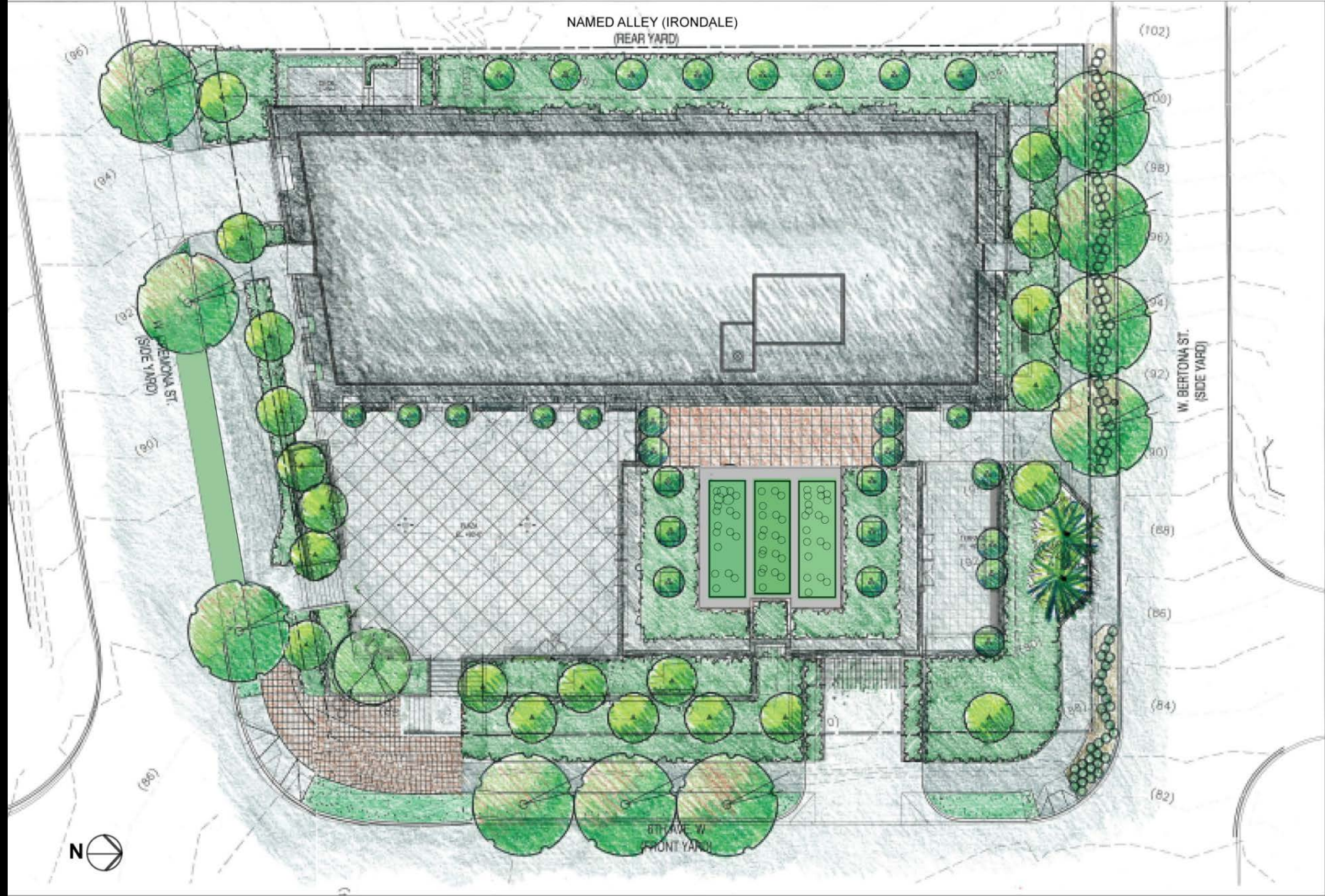
Irondale Student Housing
Site strategy and connectivity



Building Mass and Scale
Aerial view from West Bertona Street.



Building Approach
Northeast corner and lower level garage entry.



Native and Sustainable Landscaping
Landscape Plan

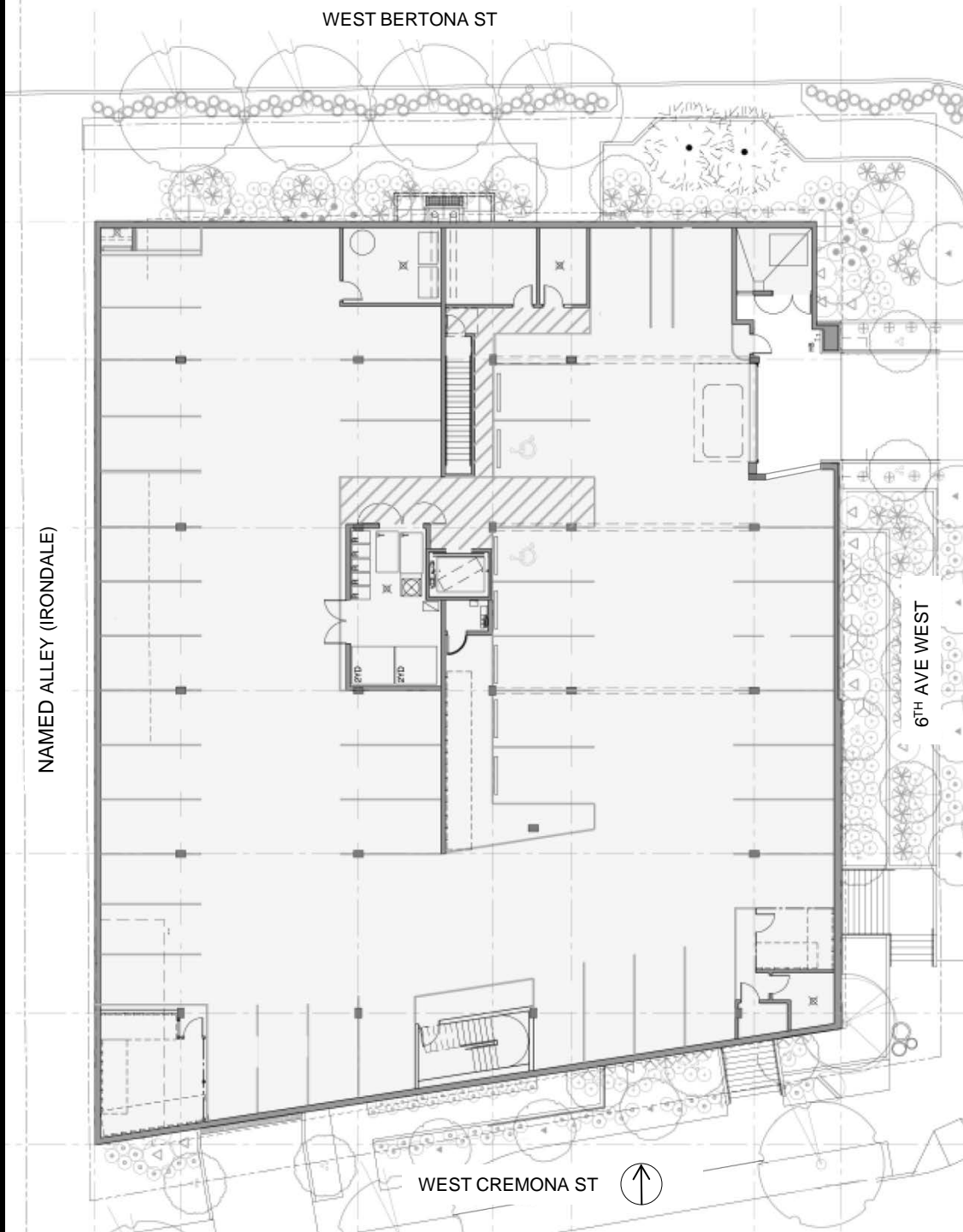


Materials and Expression
South Elevation

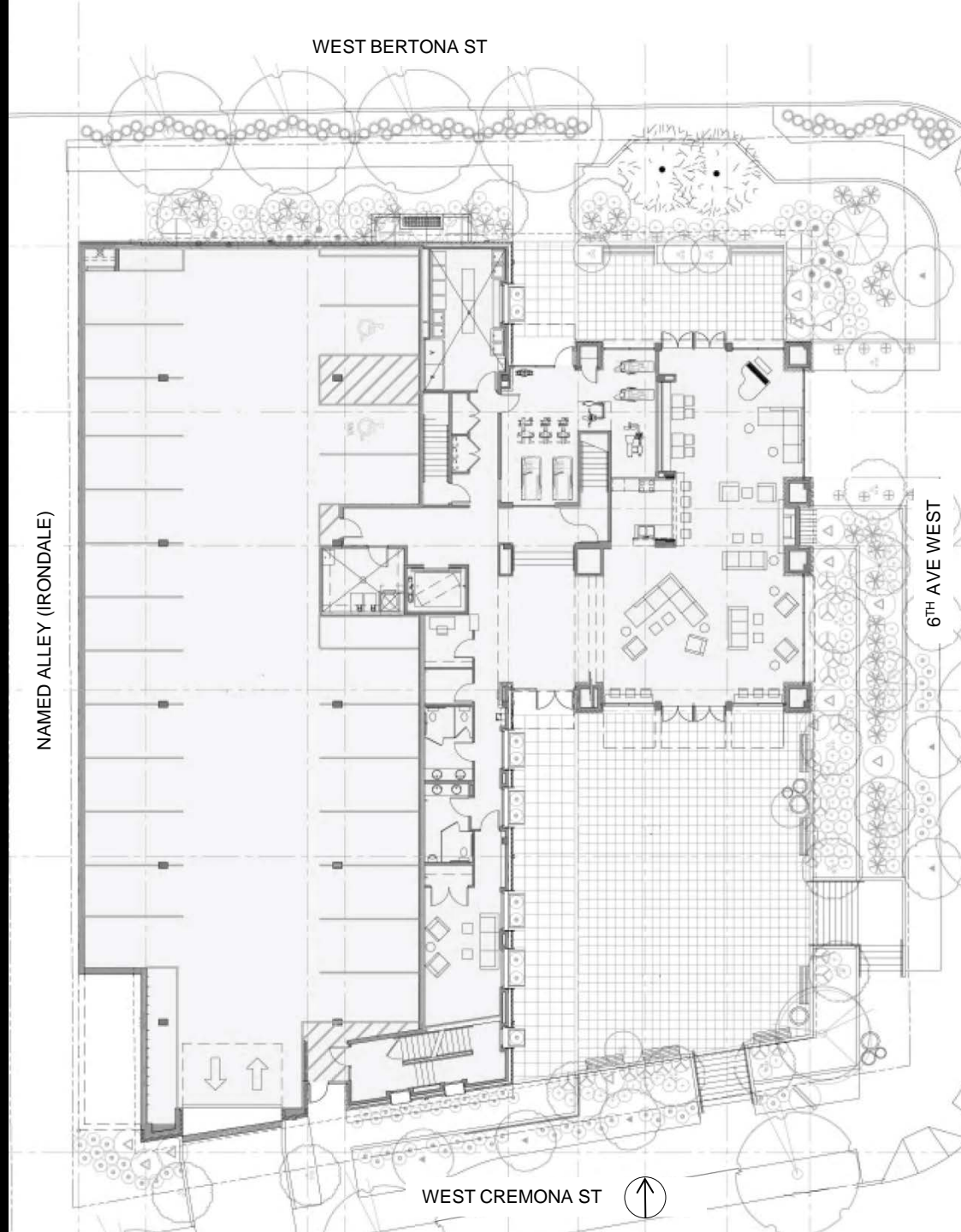


Materials and Expression
East Elevation

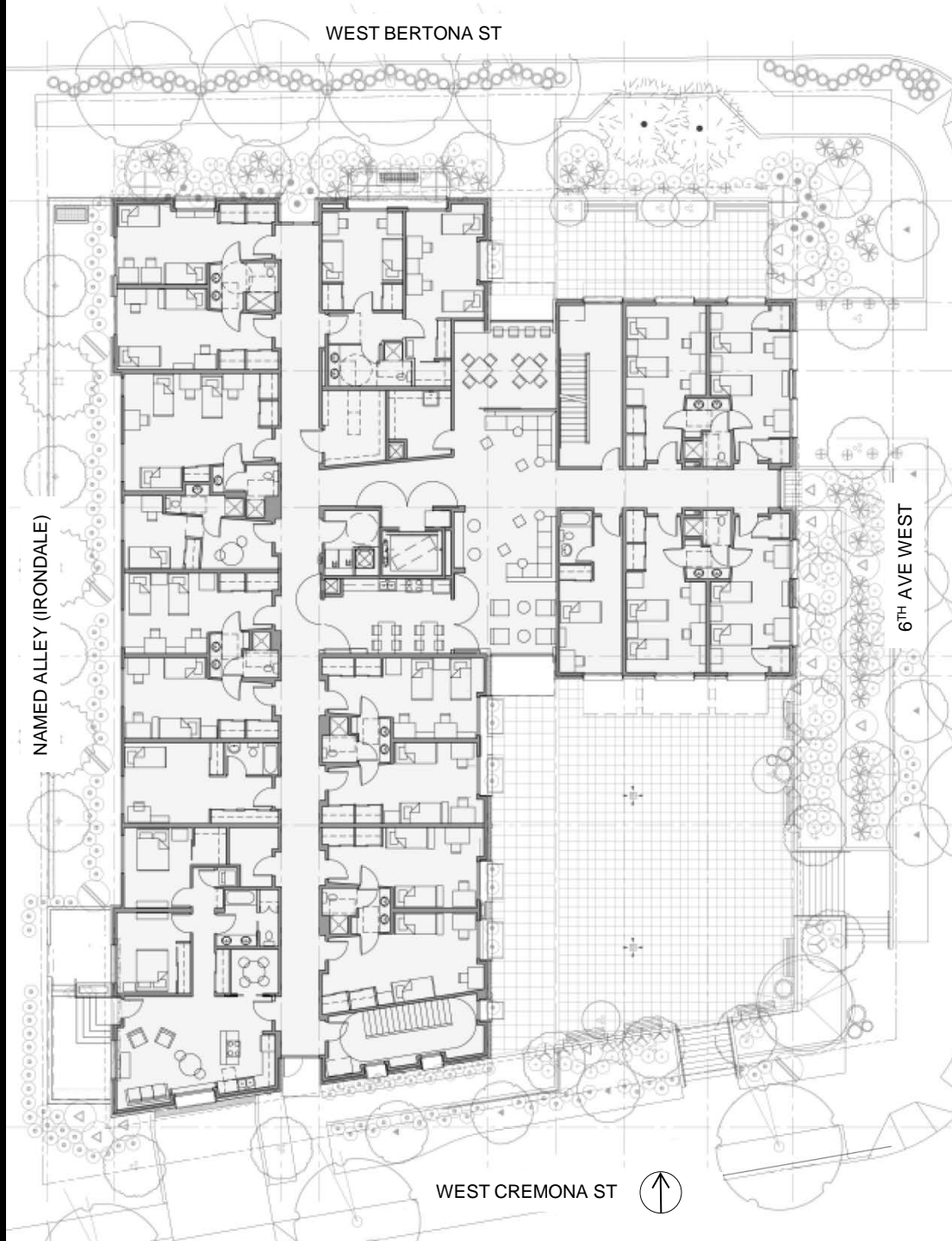
Basement Level Floor Plan Irondale Student Housing



First Level Floor Plan Irondale Student Housing



Second Level Floor Plan Irondale Student Housing



Third and Fourth Level Irondale Student Housing



WEST CREMONA ST

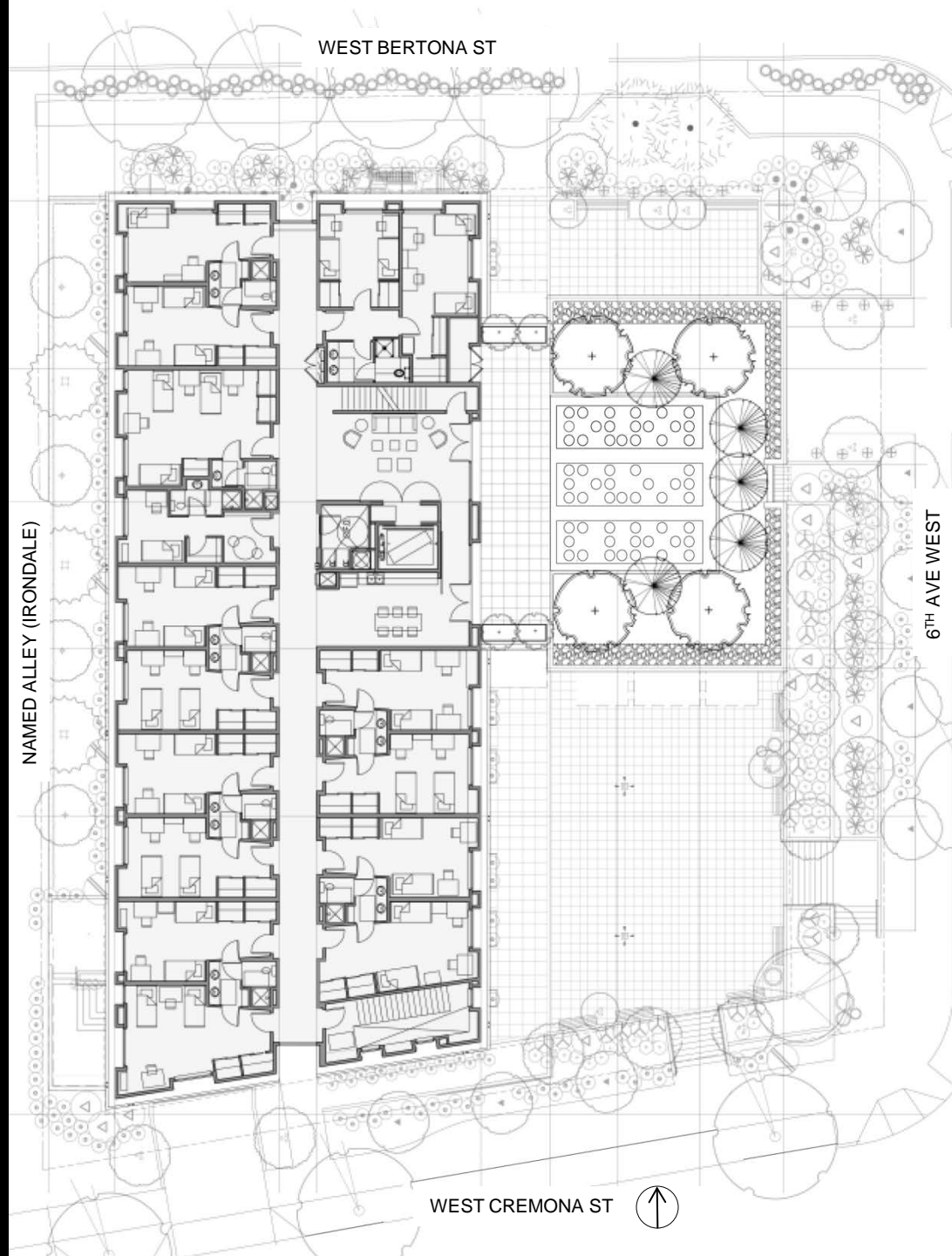


WEST BERTONA ST

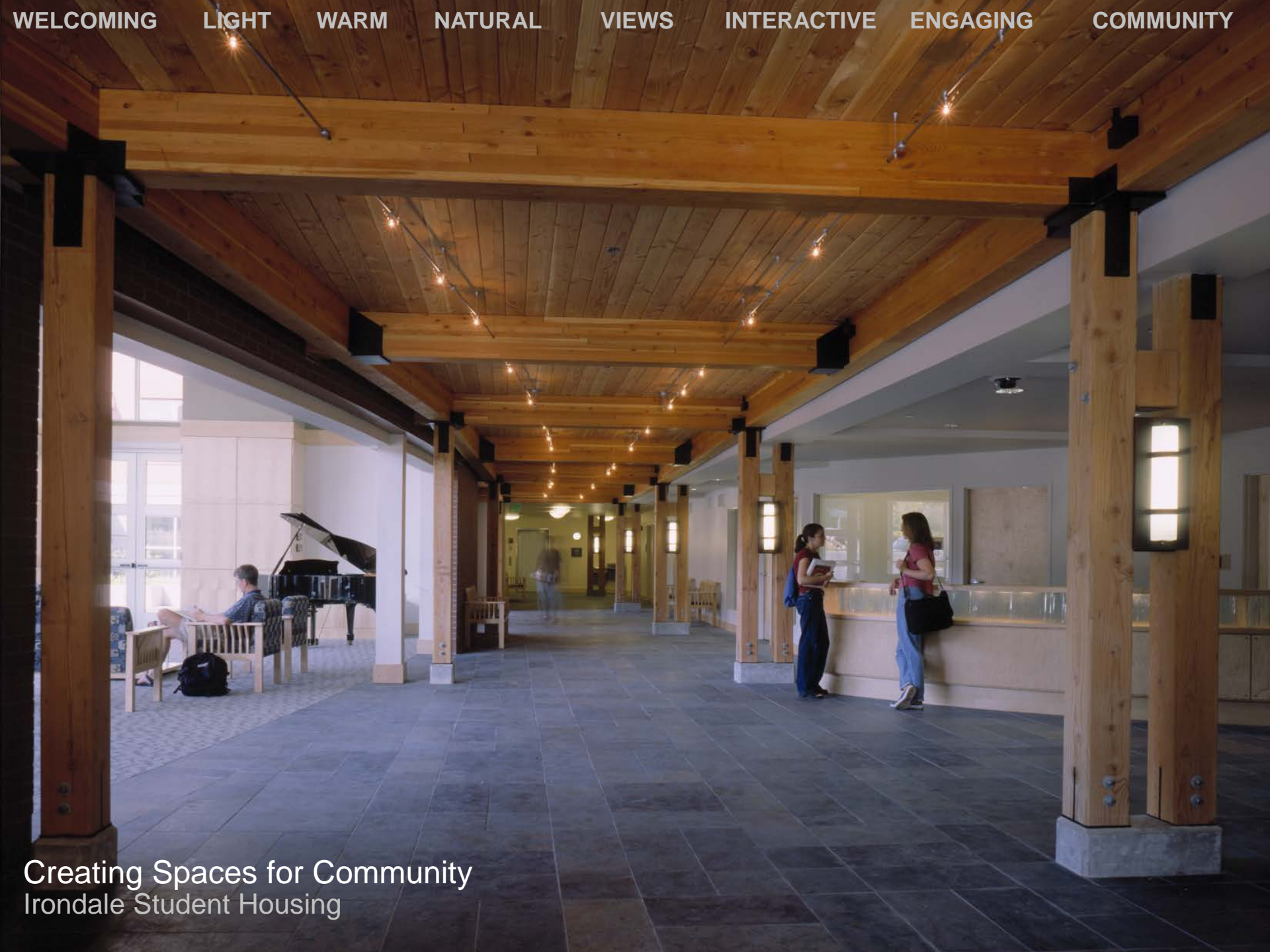
NAMED ALLEY (IRONDALE)

6TH AVE WEST

Fifth Level Floor Plan Irondale Student Housing



WELCOMING LIGHT WARM NATURAL VIEWS INTERACTIVE ENGAGING COMMUNITY



Creating Spaces for Community
Irontdale Student Housing



Interior Material Selection
Use nature as a guide



Shared spaces
Flexible and adaptable for communal gatherings

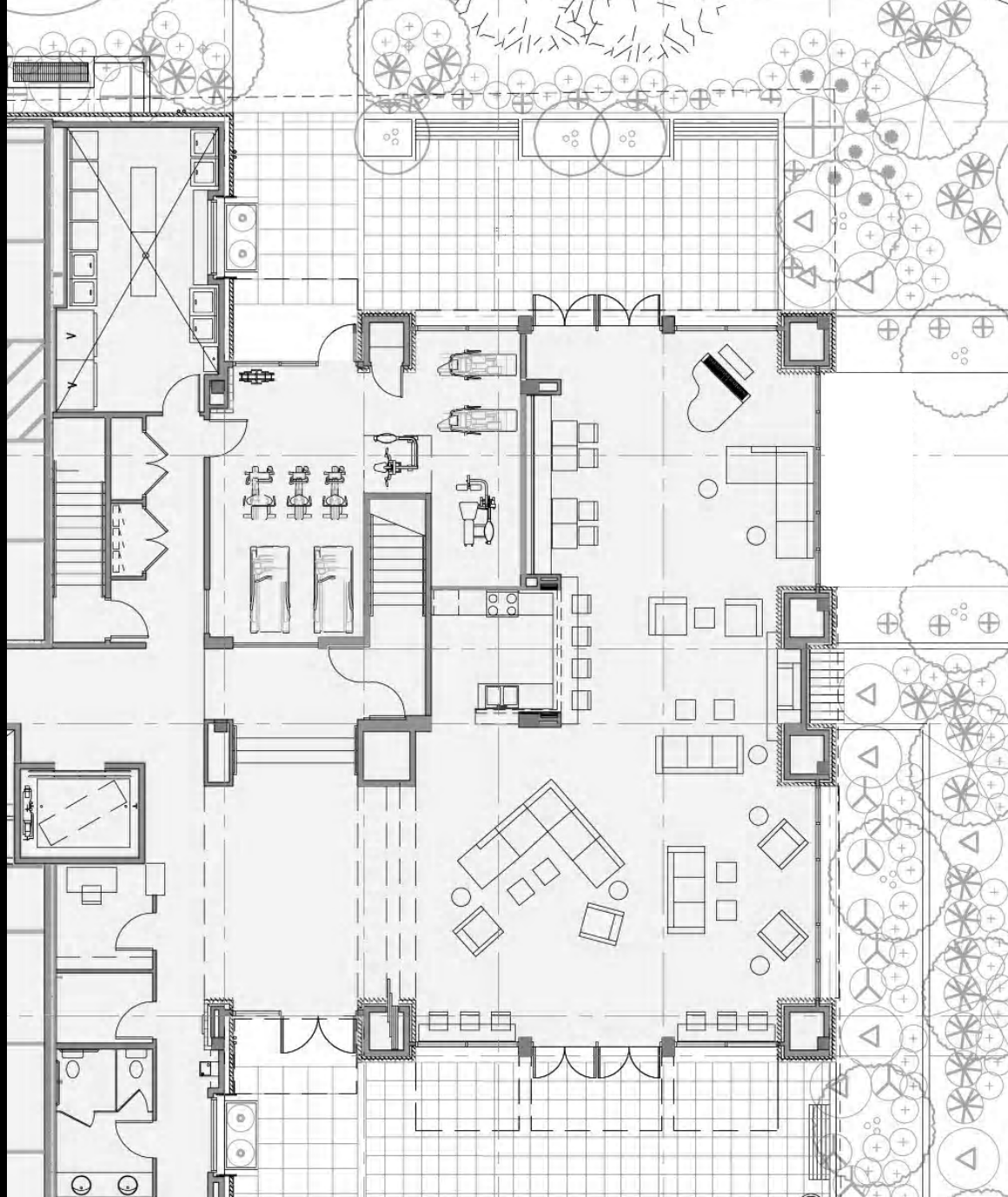


Shared spaces
Inviting and Interactive



Living and sleeping
Providing a natural living environment

First Floor Lounge
Irondale Student Housing





Resident Floor Lounge and Study
Irondale Student Housing

MITHŪN

ARCHITECTS + DESIGNERS + PLANNERS