



View from alley, looking east

November 2009

W. CREMONA STREET CLASSROOMS



FLEXIBLE HIGH-TECH CLASSROOMS

The 8,400 g.s.f., two story modular classroom building will be designed to house 5 high tech classrooms. The proposed layout shows two 60 person classrooms on the lower "alley" floor, and three 40 person classrooms on the upper "Cremona Street" level.

The building will have an interior stair and elevator for ADA accessibility between floors, and restrooms on the lower level. Mechanical equipment will be located on the roof.

The exterior expression will blend with the existing modular classroom buildings to the north with brick facades on the south and west sides. Painted wood siding will be used at the north and east sides facing the alley and existing Cremona Street Apartments.



View from W. Cremona Street, looking northwest



View from alley, looking east

SCHEDULE

2009

2010

SCHEDULE

CONSTRUCTION DOCUMENTS

Completed

PERMITTING

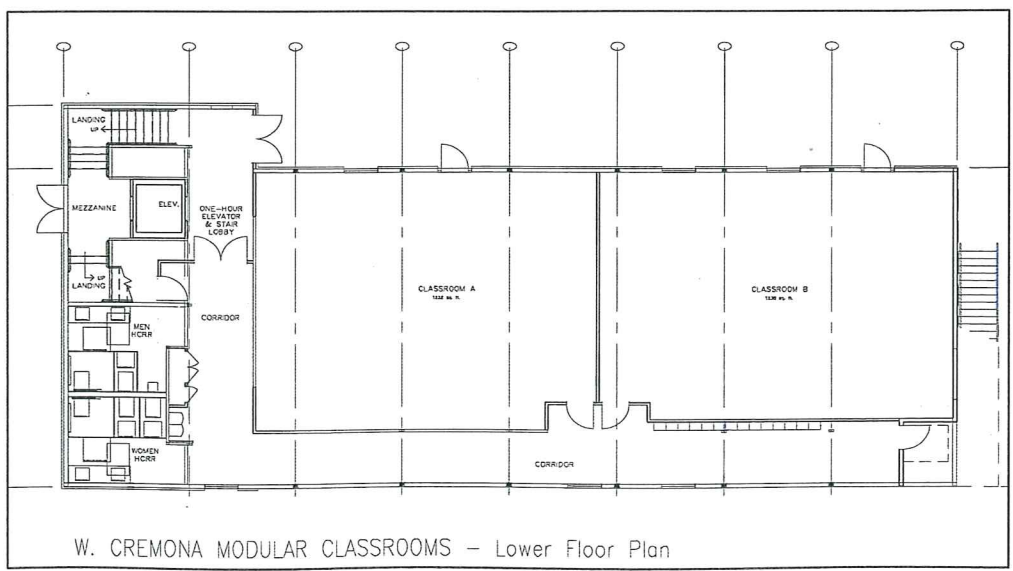
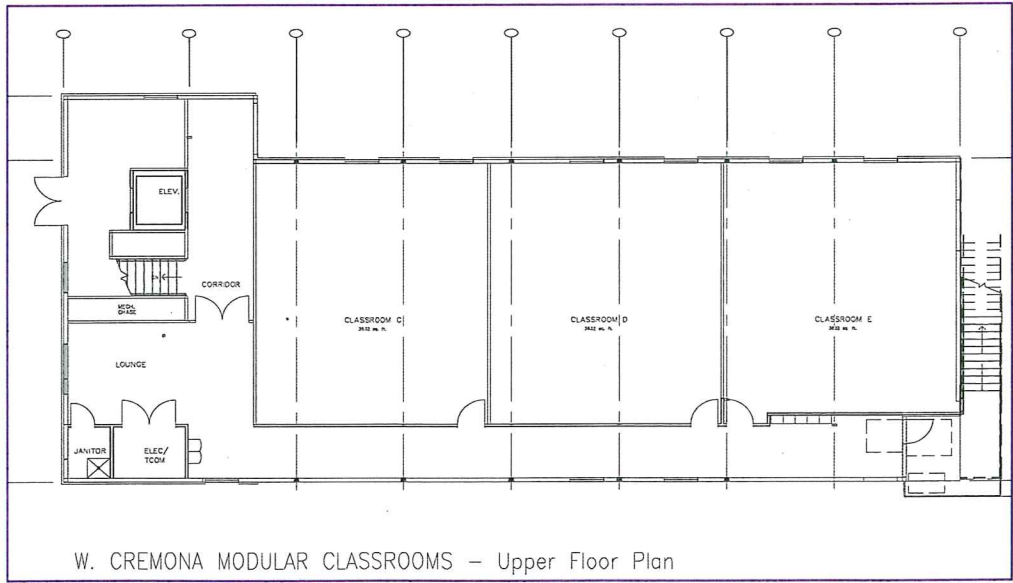
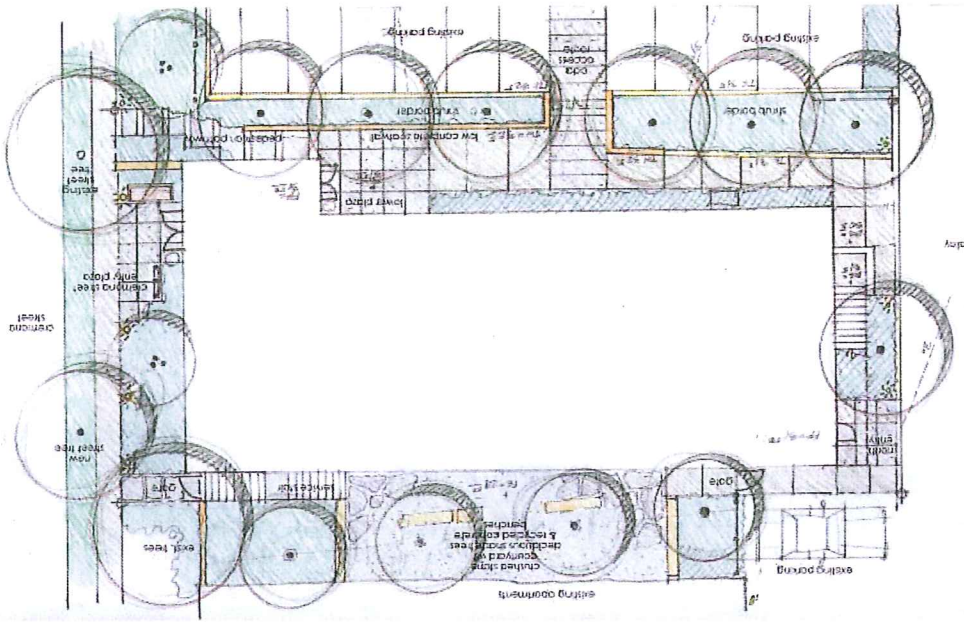
4 months

CONSTRUCTION

9 months

Complete by Fall 2010

NORTH 





Seattle
Pacific

UNIVERSITY

Engaging the culture,
changing the world®