

January 2017  
Number 19

# Emeriti-Times Newsletter

President: George  
Scranton

Editor: Evette Hackman

Members: Seattle  
Pacific University  
Emeriti



## President's Corner: "IDEALS" by George Scranton

We have just celebrated Jesus' birth in a manger (not a very "Ideal" place to be born), to an unwed mother (not a very "Ideal" situation in which to find oneself – mother or child). As I write this during the "between week," we look forward to the beginning of a New Year with many people making New Year's Resolutions in search of becoming more "Ideal" in behavior, eating habits, or lifestyle. By the time you read this in this "New Year" most of those resolutions will be a thing of the past (or to be put off for the next "New Year").

Currently, I find myself in the midst of directing Oscar Wilde's 1895 drawing room comedy, *An Ideal Husband*, for the 125<sup>th</sup> Homecoming celebration production. (Free tickets for Emeriti are available through the box office for the matinee on Saturday, February 11 @ 2:00.) It revolves around a blackmail scheme that forces a married couple to reexamine their "Ideals" that they have had of themselves, and each other. Along the way we have a cast of young lovers, society matrons, an overbearing father, and a formidable femme fatale continually exchanging repartee, and Wilde's wry commentary on the rarity of politicians who can claim to be ethically pure (or "Ideal"). (*Who knew how appropriate it would be when we chose it almost a year ago!*)

Too often when we try to make ourselves, or others, "Ideal" we lose their (and our) humanity in the process. We lose our sense of grace and forgiveness, of ourselves, and others. We become more robotic, more machine-like in our judgmental knee-jerk responses, and less "human" in the process.

Comedy most often notes, and criticizes, such idiosyncrasies through humor (which is very human). It corrects through laughter, sometimes harshly, but most often with graceful acceptance of our human condition. It lives in the hope that we will all become more fully human, "grace-filled," and forgiving of each other in the process.

Jesus was born into a not "Ideal" world, under not "Ideal" circumstances, but through grace he has provided for our salvation, and the possibility that we too will continue to become more fully Human (made in his image), and more forgiving of others for not always being "Ideal."

May the Grace and Peace of our loving and forgiving God be with us now, and always, not because we are "Ideal," but because we are forgiven.

### Purpose for Emeriti-Times

*"to edify, encourage, and connect emeriti faculty; to profile emeriti achievements (past and present); to provide news and information about members and SPU; to encourage emeriti to continue to be involved in world change." The Emeriti-Times newsletter is distributed by the Office of the Provost. Please let George Scranton know if you have recommendations or changes. gascrant@spu.edu*



- Marilyn Severson, mseverson@spu.edu : coordinator of prayers, cares and concerns.
- Adrienne Meier: contributor for "Did You Know" column.

## *Provost Jeff Van Duzer hosts Spring Tea for Emeriti*

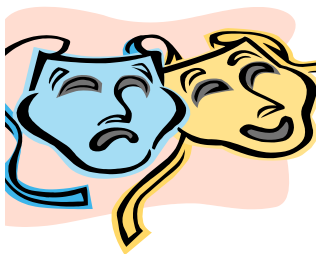
Join us on Tuesday March 21, 2017 from 1:30 to 3:00 pm in Upper Gwinn Queen Anne Room. This is a good opportunity to visit our beautiful campus and to hear from our Provost about area updates and to network with emeriti colleagues. Thank you, Jeff, and the Provost Office for continuing to be a wonderful host for this special emeriti event.



*Emeriti at SPU basketball game.* Thanks to Ruby Englund and Athletic Director, Jackson Stava, for arranging a special night for Emeriti attendance at these basketball games. Emeriti are invited to attend SPU basketball games on Saturday, February 11, 2017. Women play Simon Fraser at 2 pm; men play Central Washington at 4:30 pm. We are invited to the half time refreshment gathering with a coach who will analyze the progress of the game.

### *Emeriti Web Page Reminder:*

The Emeriti webpage is linked to the Provost page. Here is the direct link: <http://spu.edu/university-leadership/provost/news/Emeriti-Faculty>. It can also be accessed by navigating through [www.spu.edu/provost](http://www.spu.edu/provost), then clicking on Provost Gateway, and the Emeriti Faculty "button" toward the bottom of the page. *Emeri-Times Newsletters* are posted there as well. Contact Stacey O'Farrell in the Provost's office ([ofarrells@spu.edu](mailto:ofarrells@spu.edu)) if you would like to add content.



### *Theatre Department—Winter and Spring Plays*

*"An Ideal Husband"* Matinee Performance, Saturday February 11, 2017  
2:00 pm McKinley Theater. This is same time as the basketball games which are also free for emeriti. To do both, request evening theater tickets or a different day. 206-281-2959 to reserve theater tickets.

*"Into the Woods"* Spring Matinee Performance, Saturday May 6, 2017,  
2:00 pm McKinley Theater. Reserve two free tickets by calling McKinley Theater 206-281-2959.



Karen Macdonald continues to supply our newsletter with her wonderful humor: *The grandmother was in the bathroom putting on her makeup under the watchful eye of her granddaughter as she'd done many times before. After she applied lipstick and started to leave, the little one said, "But Grandma, you forgot to kiss the toilet paper good-bye!"*

*(editor's note – now I think of this every time I blot my newly applied lipstick.)*

## Emeriti Updates January 2017

This year five of the emeriti who responded with their personal updates moved to new locations and one more is due to move in March.

**Douglas Durasoff (Dana) Political Science.** After living in Edmonds since we came to SPU in 1986, we moved in August 2016 to Port Ludlow, WA. This is a really nice location on the 8<sup>th</sup> fairway! But thirty years of accumulation does not “give” easily! We are now (December) about half way through unpacking boxes... Still singing in church and OSSCS. Watch for Brahms Requiem on April 22!

**Ruby Englund (Dave\*), School of Health Sciences, Professor of Nursing (2007).** I recently read “A Man Called Ove” which depicted many aspects of my Swedish heritage and brought smiles and tears. I then went to see the movie in Swedish with English subtitles and found it was true to the story in the book and made the characters come alive. When an out of town guest was visiting we went to see the amazing Chihuly exhibit at the Seattle Center followed the next day by a visit to the Seattle Art Museum to see the Native American artifacts on exhibit. I am grateful that I have recovered from right hip replacement surgery and anticipate success when my left hip is replaced in March. I am enjoying the SPU basketball games and especially happy for the women’s team that is currently 8-0.

**Joyce Erickson (Richard), Dean of College of Arts and Sciences, Professor of English.** Late last August I earned a Certificate in Professional Editing from the University of Washington after completing nine months of study. Now with certificate in hand, I am following the advice of teachers who suggested one way to generate clients is to rely on word-of-mouth advertising. I am hoping to lighten the ennui of my retirement by freelance editing. If you’d like a bit more detail, my resume and other information can be found on [www.linkedin.com/in/joyceerickson](http://www.linkedin.com/in/joyceerickson).

**Eric Hanson (Susan), Music Department, 2016.** In July I conducted the Northwest Mahler festival. Susan and I spent September in France exploring Normandy and Brittany. Most of my days are taken up with composing and playing with our grandson. Our new address is 155 Greenview Ln, Port Ludlow, WA. 98365

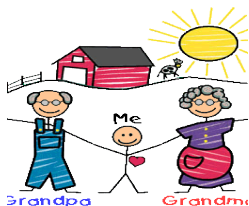
**Doris Heritage (Ralph), Physical Education and Athletics.** We have moved from our much loved Whidbey Island to Warm Beach Senior Community. Not much view but what a nice neighborhood! Plenty of fellow SPU friends as well as many other wonderful, friendly service-oriented individuals. And we find the road to SPU is much more favorable time-wise. Our new address is 20505 Marine Drive #22, Stanwood, WA 98292.

**Robert (Bob) D. Larson (Anna Marie\*)**

Now I have the time for projects.

1. Case studies of Defiance: Chrysostom, Luther and Hauge
2. The world at 10 – May 1941 – small town, marbles, baseball, swimming, parallel in world beyond: drawing lines, taking sides, showing off.
3. Nebraska Doughboy – Trace uncle to France, Verdun, and forts – just like Fort Casey

**Dave Le Shana (Becky), President, 1981.** We are grateful to God for His faithfulness! We are enjoying our wonderful family and friends. I have now retired as Chair Emeritus of Azusa Pacific University. Greetings to all!



My grandson called the other day to wish me Happy Birthday and he asked how old I was. I said “80”. Looking surprised, he said “did you start at one?”

**Macdonald, Mike (Karen).** Retired Professor of European Studies, German and Philosophy 2007. Big news in 2016 is that Karen and I will move to the retirement community Emerald Heights here in Redmond on March 16, 2017. We're looking forward to the benefits of this new life, but will miss our 70 home neighborhood and house of 37 years. We have lots of packing, re-distribution and disposing ahead of us. Returned in December from our traditional month plus in Puerto Vallarta. This year we enjoyed Larry and Suzanne Wright for 3 weeks as well as Evette and Bob Hackman for 10 days. We all had separate condo apartments in the Old Town section of town. Delightful!

**McClurg, Vicki (Jim).** School of Health Sciences, Assistant Professor of Nursing. Jim and I have been experiencing lots of travel and fun since he retired at the end of April. I'm still working per diem at Virginia Mason University Village Medical Center so have lots of flexibility. We have been tent camping the last few years and now have moved up to a small travel trailer and are looking forward to doing more camping that isn't dependent on the weather. Can't wait to take it out for the first time. We're learning a lot about trailers now. Our family is doing well and we live close to all of our grandchildren so babysit often. I hope and pray that all of you have a very blessed new year.

**McKenna, Dave (Jan)**

Dearest Friends: The joy of Christmas is fully ours. 2016 does not qualify as a joyful year with peace on earth and goodwill among all people. But if we focus on the light rather than the darkness, our whole perspective changes. We choose to focus on the light.

When God asked Solomon what he wanted as gifts for his kingship, he answered, "...a discerning heart to lead his people and to distinguish between right and wrong." God responded by giving him the gift of wisdom with the bonus of riches, honor and the promise of a long-life. To him and him alone God gave first the gift of wisdom with wealth, name and long-life to follow. For us, the order is reversed--wealth, name, long-life and then hopefully, wisdom. We count our blessings in that order.

Our WEALTH is not measured in dollars, but in the contentment of having all of our "needs" met and finding our "wants" so very few. Best of all, we have learned the joy of giving to our family, friends, and especially to needy and worthy students in the institutions where we have served. Getting is hard work, but giving is just plain fun.

Our NAME is not measured in celebrity status, but in the gratitude of seeing our children, grandchildren, and now great grandchildren going through the journey where grace leads and love wins. Whether traveling at the high speed of success or negotiating speed-bumps on the journey we claim them, we love them and we are proud of them, especially Carter and Maxwell, our newest great grandchildren who joined our family in 2016.

Our LONG-LIFE is not measured in calendar years, but in chapters that open with hope and close with joy. Believe it or not, Jan, as a PK or Preacher's Kid can remember the time when pastors actually made house calls and I, as a DK or Depression Kid, can remember the time when "hacking" meant listening to your neighbor's secrets on the party line. So, don't be fooled by the numbers 87 and 85, we are leaning forward to 90, especially when peer pressure will be reduced.

Our WISDOM is not measured in words of advice to a younger generation, but in the personal perspective of beginning to see things whole. With our faith in Jesus Christ, we are learning what it means when we read, "In Him all things all hold together." With full confidence, we can answer Yeats' question, "Will the center hold?" with an unequivocal "Yes," especially as we try to live out Job's profound insight, "Age should speak; advanced years should teach wisdom." What a challenge!

With the joy of His presence in this Holy season, Dave and Jan

**Marilyn Poysky (Frank), School of Health Sciences, Professor of Nursing, 2002.** We are busy with our grandchildren and time seems to fly by. We took our annual trip to Seattle and Oregon last summer to see friends, I don't think we could survive the summer heat in Texas otherwise!

**Christina Roseman, Professor of Foreign Language, C. May Marston Professor of Classics 2001.** I have completed my (awful) downsizing plus move to Timber Ridge in Issaquah. The facility is lovely and staff and residents very welcoming and helpful. I am very glad I did this before getting into my 80s (as of February 2017) because the recovery from it all has been rather slow. However, Charlie the cat and I are doing well. My new phone number is 425-392-8534 and the address is 100 Timber Ridge Way NW, Issaquah, WA. I hope to make it to the Spring Tea and maybe a play before that.

**Carl G. Roseveare (Arlene), School of Education Learning Resources.** We moved to Liberty Shores Assisted Living. Our new address is 19360 Viking Ave NW #301, Poulsbo, WA 98370.

**Lilyan S. Snow (Don), School of Health Sciences, Professor of Nursing, 1998.** (Editor's note: We printed a beautiful poem by Lilyan in the last *Emeri-Times* and Lilyan points out that she had it "printed" to give to friends, not "published". She emphasized that it was not edited. Regardless, it was a beautiful poem.) Lilyan says she is thankful for the newsletter and its ongoing tradition.

**Arlo D. Tiede (Della F. Tiede\*), Della was Dean of the School of Health Sciences, 1981.** In late September, I sold my home in the Warm Beach Senior Community and moved to McPherson, Kansas 67460-8080. I am now living with my daughter Marlice and her husband Louie Bato. I am awaiting an apartment to become available in independent living. My new address: 1471 13<sup>th</sup> Ave West, McPherson, KS 67460-8080.

**Michael F. Ziemann (Joy) European Studies and Linguistics, 2014.** For the past three years Mike has been property manager of the First Baptist Church of Des Moines, WA, as well as Chair of Permanent Funds. For 2017, he will be moderator of the church. Mike says he does not know the meaning of boredom. Only two years into retirement and he seems busier than ever, always making lists. Besides his involvement in church, he does the shopping, cooking, gardening, laundry and much of the finances. He presented another research paper at the 42<sup>nd</sup> European Studies Conference at University of Nebraska in Omaha, in Omaha, Nebraska. Mike and Joy traveled to Hawaii and Austria.

\*deceased.



A 4 year old was asked where her grandparents live and she said they live at the airport. When we want to see them we just go get them . When we are done we take them back to the airport.

# SPU Emeriti ID Card Benefits



Did you know that all retired and emeriti faculty are entitled to a specialized SPU ID card, or “SeaPac Pass”? Some of you may already have an Emeriti ID Card, but if you don’t yet have one, it may be worth a trip into the University Services Office the next time you are on campus.

If you are still in possession of your original faculty ID card, you can turn it in to exchange for an Emeriti Card. Even if you have lost your ID card, you can get a first-time Emeriti ID card free of charge. Your photo will be taken and a card can be printed for you while you wait.

Benefits of the Emeriti ID Card include:

1. Access to the **Ames Library**, along with library privileges
2. Admission to athletic events in **Royal Brougham Pavilion** for *you and three guests*, as well as access to the cardio workout and weight rooms during open hours
3. 10% Faculty Discount at the **SPU Bookstore**, and many other bookstores
4. Option to add a **Gwinn Commons** meal plan at Faculty Rates

You must be fully retired (no longer teaching as an adjunct) to be eligible to receive an Emeriti SPU Identification Card. To collect your card, you will need to stop by in person to the **University Services Office** (on 6th Avenue, immediately up the hill from Gwinn Commons).

Questions: Contact the Provost’s Office or Campus Card Services at 206-281-2693

## SPECIAL NOTICES:

**Miriam Winifred Watson.** While Ms Watson was not SPU faculty, she was the youngest child of someone many of you may know: Dr. C. Hoyt Watson (SPU’s third President) and Elsie C. Watson. She died August 5, 2016, one month shy of her 86th birthday. She invested her life in public education as a teacher and was very active in First Free Methodist Church. Her memorial service was September 11 at First Free and she asked that donations be sent to SPU.

**Special praise for Doris Heritage celebrating International Women’s Day.**

<http://www.oiselle.com/blog/celebrating-international-womens-day-doris-brown-heritage>

**Gene Lemcio’s excellent poem was published:** “The Lion-Lamb of Lviv (a fantasy in verse)”, *THEOLOGY* 119.6 (Nov-Dec) 443-445. Look for it in the June 2017 *Emeri-times* newsletter.

## Special Collections Exhibit in Honor of SPU’s 125th Anniversary

The library is currently hosting a special collections exhibit in honor of SPU’s 125th anniversary. The exhibit is located on the south exterior wall just outside of the Seminar Room on the second level. The exhibit was curated by Steve Perisho, theology.

## SPU Emeriti Organization Guidelines (non-binding)

Summarized by Michael Macdonald, President, 2007-2016

These updated guidelines will reside on the inside cover of the Emeriti Directory

**Seattle Pacific University Emeriti:** An organization of retired SPU faculty and administration whom the University has honored for meritorious service.\*

**Vision:** To work towards a world in which people are whole, and love and justice reign.\*

**Mission:** We, the SPU Emeriti, will continue collegial fellowship among our members, actively support the ongoing mission of the University, and continue our participation in the intellectual and spiritual life of the Christian higher education community. We recognize that, in doing so, we enhance the spiritual, psychological and physical well-being of our members.\*

**Newsletter and Praises, Prayers, Cares and Concerns:** The emeriti started a newsletter in 2007 and named it *Emeri-Times*. It is published biannually by the newsletter editor and distributed by the Office of the Provost. A coordinator for the new area Prayers, Praises, Cares and Concerns was added in 2014.

**Elections and Traditions:** Currently, the only officer is the President, who is elected by the group. The president is elected for a three year term, and can be re-elected. The current emeriti president, the emeriti newsletter editor and the SPU provost (or her/his designate) make up an advisory Executive Committee.

In previous years, the emeriti organization treasurer collected dues from its members and donated these monies back to SPU. Dues were abolished in 2009 with the money in the account (\$361) going to the Library Endowment Fund.

**Current Privileges:** Privileges for emeriti faculty as listed in the Faculty Handbook are: 1) use of SPU library and library privileges; 2) a mailing address, an SPU email account, a bookstore discount, and dining privileges in Gwinn Commons at faculty rates (in order to gain the library check-out, bookstore, and dining privileges, emeriti need an ID card, which can be obtained at the University Services office (3220 6<sup>th</sup> Ave. W.); 3) conversion of Term Life insurance to Whole Life within 30-day period; 4) continuation of benefits as provided by COBRA; 5) listing in the University catalog; and 6) entitlement to participate with the faculty in all University events (e.g. Commencement ceremonies, Ivy Cutting, New Student Convocation).

Additional privileges not listed in the Handbook: 1) free admission to Falcon sporting events in Royal Brougham Pavilion (with an SPU ID card); 2) two free tickets to SPU's matinee theatre performances on designated dates; 3) mid-week Faculty/Staff House reservation privileges at Camp Casey (holidays and summer months excluded); 4) a free campus parking pass provided by the President's Office; and 5) use of the Graduate/Faculty reading room in the library. General discounts are also made available that may include computer hardware and cell phone plans. For updated information, please visit the Human Resources website at <https://wiki.spu.edu/display/HR/Employee+Resources> and click on "Product and Service Discounts for Employees."

**Website:** The Office of the Provost maintains a website for emeriti faculty, which includes updates on upcoming events, a detailed listing of benefits, contact information, and more: [spu.edu/university-leadership/provost/news/Emeriti-Faculty](http://spu.edu/university-leadership/provost/news/Emeriti-Faculty).

**Administration Work:** The administrative work is done out of the Office of the Provost.

**Meetings and Activities:** There are at least two meetings each year, a luncheon in the fall hosted by the SPU President and a tea in the spring hosted by the Provost. Other activities like a summer picnic or gathering at Warm Beach are sometimes planned.

\*Approved unanimously at the April 9, 2008 spring meeting and slightly revised in 2016

## In Memory Of



**Howard Mount**, Excerpted from *Response*, Autumn 2016

Howard died September 14, 2016 at the age of 82. He is survived by his four children and seven grandchildren. According to an article in *Response* magazine, “Howard Mount, a certified public accountant, loved to teach and to problem solve, to create forms and make processes more efficient..... He began his career in higher education at Washington State University where he became controller and assistant vice president for finance. In 1975 ... [he came to] Seattle Pacific University and assumed the duties of vice president for finance.” He obtained an MBA from University of Puget Sound and became an accounting professor and associate dean in the SPU School of Business and Economics.

“In 1992 while on sabbatical from SPU, he spent a year in the United Arab Emirates as a classroom instructor and supervisor of finance and administration at the Dubai Women’s College.” After retiring from SPU in 1995 he worked at Warner Pacific College as vice president for business affairs and then a classroom instructor at Highline Community College.

He was married for 54 years to Helen who passed away in 2011. He moved to Crista Shores retirement community where he helped other residents with their computer problems and transportation needs. He seemed to be called to helping people. His children are Christopher Mount (SPU 1984), Matthew Mount, Michelle Mount Woolley (SPU 1993) and Allison Mount Tran (SPU 1996).

### **Robert Chamberlain.**

As stated upon Bob Chamberlain’s retirement from SPU faculty in 1999, Bob assumed tasks requiring “the tenacity of a bulldog and the finesse of a chess champion.” He was the principal author of the Seattle Pacific Faculty Handbook. And twice he was faculty chair. He was also Chair of the Department of Communication and Journalism for fifteen years. Not only that, he was a baker and master carpenter. His students called him “Dr. Bob.”

In a note after his passing on June 23, 2016, his wife Betty said that he passed away after a long battle with diabetes. “I was blessed to have him as my best friend and partner for 54 years. SPU was a large part of our lives for much of that time.” There was a memorial service on Saturday, July 30, 2016, at Puyallup United Methodist Church. Betty includes her address and phone number: 32049 109<sup>th</sup> Place SE #104, Auburn, WA 98092, 253-876-6104

Marilyn Severson reports: We remember his many contributions to SPU, teaching, serving on numerous faculty committees including chair of the faculty twice, leading the department of communication and journalism for many years. Some of us remember fondly the meals he and Jim Chapman, Bill Hanson, Bill Rearick, and others (whose names escape me at the moment) prepared for Faculty Retreat for several years. And Bob alone cooked wonderful meals for Language Camp students many years! (Some students weren't quite sure what bouillabaisse was much less if they should eat it, but it was delicious!)



## Did You Know? by Adrienne Meier, University Archivist, SPU Library

Did you know that Seattle Pacific acquired the Casey Campus in November 1955 for \$22,500? That's the equivalent of about \$203,000 in 2016 dollars. Fort Casey was originally built by the federal government to protect the entrance to Puget Sound, and construction was completed in 1903. Changes in military technology after the Second World War made the fort obsolete, and the installation was deactivated by the federal government in 1950. Control passed from the military to the State of Washington, which turned the fort itself into a state park, but looked to dispose of the other buildings, such as the barracks, officer's quarters, and mess hall.

Seattle Pacific College became interested in purchasing the Casey property shortly after control passed to Washington State. College President C. Hoyt Watson suggested to the Board of Trustees that one of several military surplus properties then available be purchased by the college "for research and recreational purposes." In the fall of 1955, the Board of Trustees voted to purchase 87 acres of the Casey property, including 12 buildings and access to the shoreline. One official in Seattle city government reportedly told President Watson that SPC had "obtained the garden spot of the Puget Sound area." Charles F. Schockey, professor of Bacteriology, was named the first director of the new "Camp Casey Branch." He presided over the first renovations and repairs of the property and the first event held at Casey: 200 sixth graders from three Seattle elementary schools participated in a five day outdoor educational trip.

Since that first event, numerous outside groups have used Casey as the setting for their events, but the bulk of the use has come from Seattle Pacific itself. New Student Orientation and Faculty Retreat; athletic team training sessions; choir and band retreats; special academic quarters and intensive classes in science, education, and writing are just some of the many uses the University has put the Casey property to.

What memories do you have of Casey? E-mail Adrienne Meier ([ameier@spu.edu](mailto:ameier@spu.edu)) with your recollections and she will add them to the Casey Collection of the SPU Archives.

### Notes from 1955



## Winter/Spring Quarters 2017, Academic events

**Marston Lecture** - Lecturer: Dr. Owen Ewald  
Tuesday, February 7, 2017  
3:00 - 4:00 p.m.  
Demaray Hall 150  
Hosted by The Center for Scholarship & Faculty  
Development

**Emeriti Faculty Tea \***  
Tuesday, March 21, 2017  
1:30-3:00 p.m.  
Upper Gwinn Commons

**Weter Lecture** - Lecturer: Dr. Daniel Castelo  
Thursday April 13, 2017  
7:30 p.m. to 9 p.m.  
Title: *"What does it mean to be a Global Christian?"*  
Upper Gwinn Commons

**Walls Lecture** - Lecturer: Dr. Rob Wall  
Tuesday, May 2, 2017  
7:00p.m.  
Upper Gwinn Commons

**Retirement Dinner\***  
Thursday, May 4, 2017  
6:30 p.m.  
Upper Gwinn Commons

\* *Invitations forthcoming.*

**Ivy Cutting June 9, 2017 Tiffany Loop 9:30 am**

**Graduate Commencement June 9, 2017 Tiffany Loop 2:00 pm**

**Undergraduate Commencement June 10, 2017 Key Arena 1:00 pm**